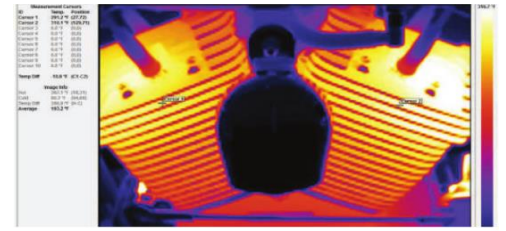
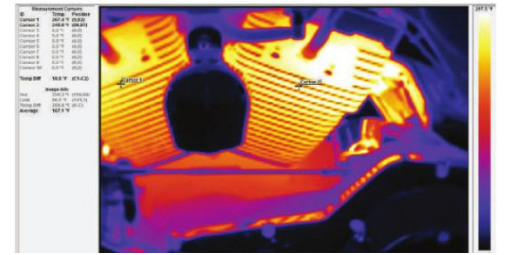


## Schaefferoil Empfehlung für Harley Davidson Motorcycles

Modell	Motor		Hauptantrieb/Getriebe	Transmission
	707	20W-50 V-Twin oder Evo		
XL 883 Sporster	707	20W-50 V-Twin	240	240
XL 883R Sporster	707	20W-50 V-Twin	240	240
XL 1200R Sporster Roadster	707	20W-50 V-Twin	240	240
XL 883L Sporster low	707	20W-50 V-Twin	240	240
XL 1200C Sporster Custom	707	20W-50 V-Twin	240	240
XL 883C Sporster Custom	707	20W-50 V-Twin	240	240
FXDWGI Dyna Wide Glide	707	20W-50 V-Twin	240	170
FXDLI Low Rider	707	20W-50 V-Twin	240	170
FXDBI Dyna Street Bob	707	20W-50 V-Twin	240	170
FXDCI Dyna Super Glide Custom	707	20W-50 V-Twin	240	170
FXDI Super Glide	707	20W-50 V-Twin	240	170
FLST/FLSTI Heritage Softail	707	20W-50 V-Twin	240	170
FXSTB/FXSTBI Night Train	707	20W-50 V-Twin	240	170
FXSTD/FXSTDI Softail Deuce	707	20W-50 V-Twin	240	170
FLSTN/FLSTNI Softail Deuce	707	20W-50 V-Twin	240	170
FLSTC/FLSTCI Heritage Softail Classic	707	20W-50 V-Twin	240	170
FXSTS/FXSTSI Springer Softail	707	20W-50 V-Twin	240	170
FXST/FXSTI Softail Standard	707	20W-50 V-Twin	240	170
FLSTSC/FLSTSCI Softail Springer Classic	707	20W-50 V-Twin	240	170
FLSTFSE Screamin Eagle Fat Boy	707	20W-50 V-Twin	240	170
FLSTF/FLSTFI Fat Boy	707	20W-50 V-Twin	240	170
FLHX/FLHXI Street Glide	707	20W-50 V-Twin	240	170
FLHRS/FLHRSI Road King Classic	707	20W-50 V-Twin	240	170
FLHR/FLHRI Road King	707	20W-50 V-Twin	240	170
FLHRCI Road King Classic with Side Car	707	20W-50 V-Twin	240	170
FLHT/FLHTI Electra Glide Standard	707	20W-50 V-Twin	240	170
FLHTCI Electra Glide Classic	707	20W-50 V-Twin	240	170
FLTRI Road Glide	707	20W-50 V-Twin	240	170
FLHTCUI Ultra Classic Electra Glide	707	20W-50 V-Twin	240	170
FLHTCUSE Screamin Eagle Ult Cla Ele Glide	707	20W-50 V-Twin	240	170



Wärmebild mit konventionellem Harley Davidson Motorenöl 20W-50



Wärmebild mit Schaeffer's 707 Supreme V-Twin Synthetik Plus

	Harley Davidson Öl	Schaeffer V-Twin Öl	Differenz
Messpunkt 1	144 °C	130,8 °C	13,2K
Messpunkt 2	154,5 °C	120,3 °C	34,2K